

SYML	REVISIONS	DATE	APPL
A	REMOVE PA-19 CALLOUTS. REMOVE CHANGE ON SELECTOR VALVE, AND PLACARD NOTE.	1/17/84	88864
B	REMOVE -44 & -42 TUBE ASSY. ADD EXISTING CROSS-OVER TUBE & TEE. - NO CHANGE TO ORIGINAL FUEL LINE TUBE & TEE.	3/12/84	88864
C	ADD PLAC, 6, 244, -40 TO -44, -43 TO -45, -44 TO -46 & -45 TO -47.	5/25/84	88864

- 1 TRIM BACK FACE OF SPACER BLOCKS TO ALLOW SLIP FIT OF TANK
- 2 FINISH SPACER WITH SEALER BEFORE BONDING. CORK FACES
- 3 FINISH ALUM. PARTS WITH 2 COATS PRIMER PER MIL-P-23377.
- 4 SHIM WITH CORK SHEET TO PROVIDE CLOSE FIT OF TANK
- 5 TUBING ASSY.

DASH. NO. NO. END FTG.  
 4 2 NETWORK PPN 12864-03  
 45 1

FLARE TUBE ENDS PER MS3584. INSTALL AN818-6D NUT WITH MS20819-6 SLEEVE ON REAR END OF ENDS ASSY. TO BE FOUND AS REQUIRED TO PROVIDE RUNS AS SHOWN.

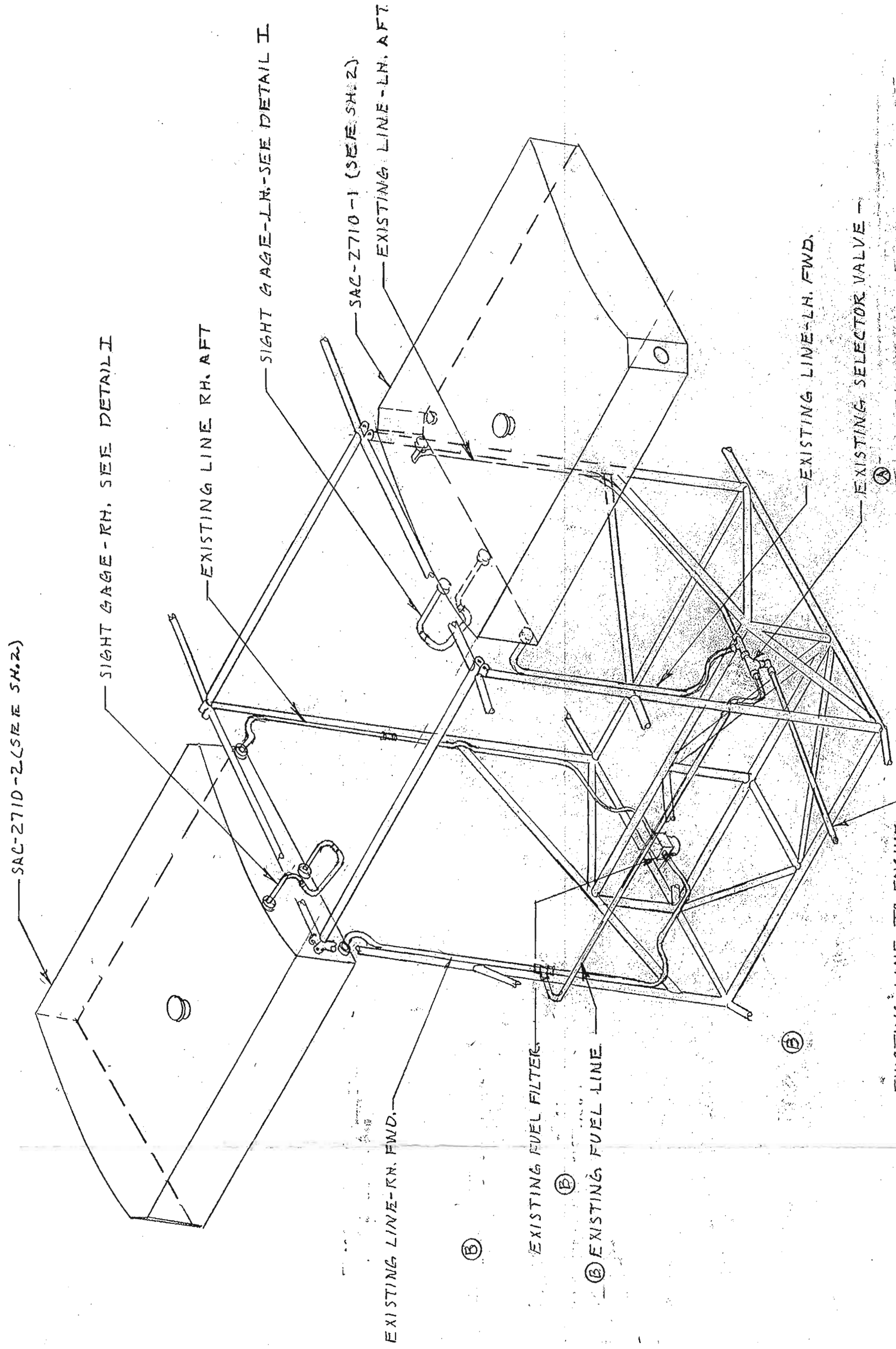
- NOTE: 1. TANKS ARE TO BE GROUNDED PER FAR PART 43.13-1A, PAR. 432.  
 2. FUEL SYSTEM TO BE INSTALLED PER FAR PART 43.13-1A, PAR. 708.  
 3. BOND CORK STRIPS WITH 3M SCOTCH GRIP NO. 1300L.  
 4. .025 DIA. RESTRICTOR HOLES ARE REQUIRED IN SIGHT GAGE IF HOLES ARE NOT IN TANK WALL. IT IS NECESSARY TO PLUG THE -45 & -44 TUBE ASSYS. AND DRILL THRU THE PLUGS THE ABOVE DIA. HOLES.  
 5. TANK MAX. CAP. 29 GAL. INSTALLED, UNUSABLE FUEL APPROX. 1 PINT. ADD PLACARD AT FILLER NECK - MAX. CAP. 29 GAL. - VENTED CAPS REQUIRED.

④ LIGHTENING HOLES OPTIONAL.  
 ⑤ SEAL -28. OPT -40 & -16 WITH PRO-SEAL 890-B2-RTV 167

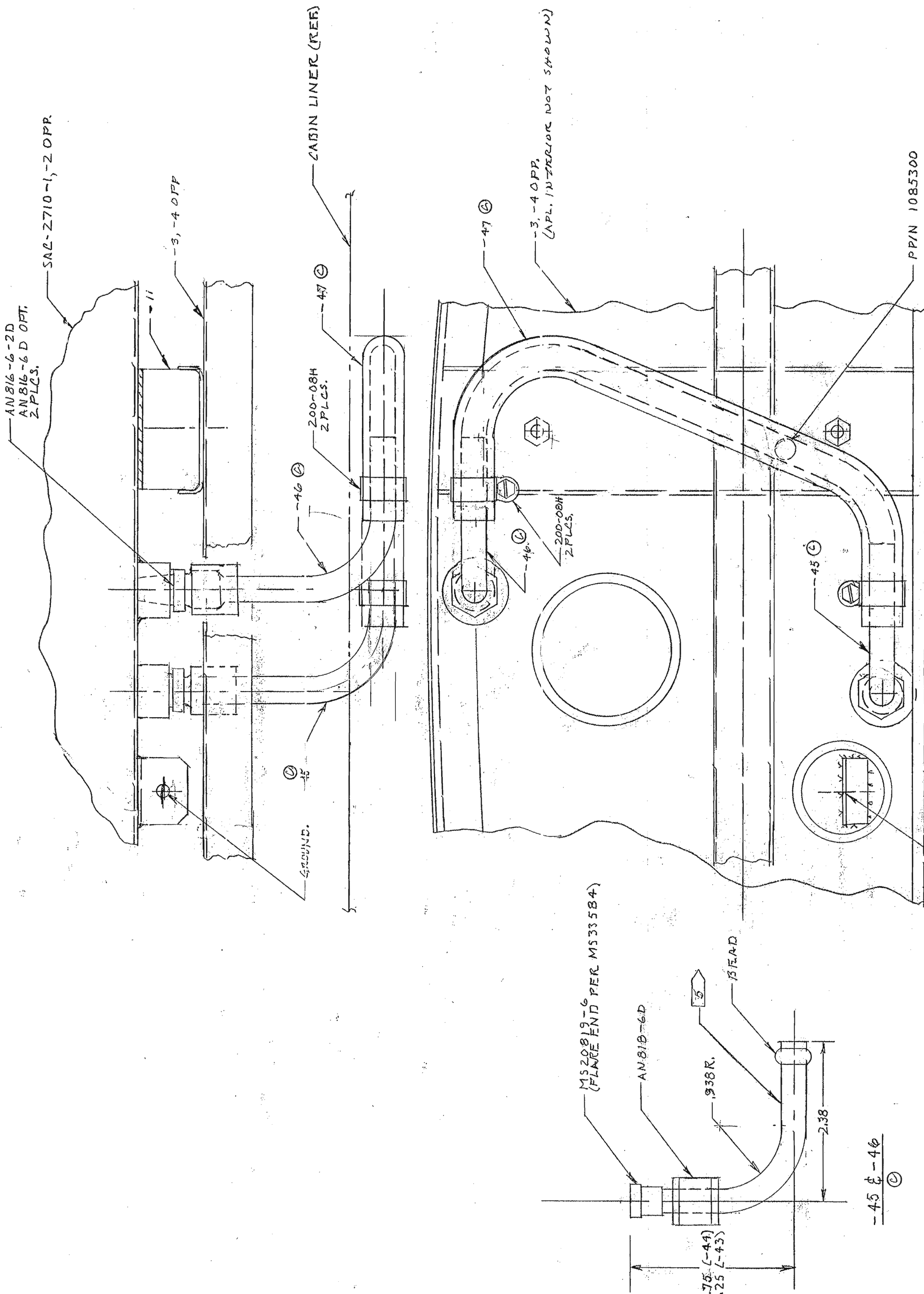
SEE SH. 2 FOR TANK INSTL. P/L.

Part No.	Item	Shed Size	Material	Qty.	Loc.
-44	FUEL LINE INSTL.			1	
-47	GAGE TUBING	3/8 ID. LEN. 11.0	OPT. AN818-6D	4	
-45	GAGE LINE ASSY-LWR	3/8 OD LEN. 4.75	AN818-6D	4	
-45	GAGE LINE ASSY-UPE	3/8 OD LEN. 4.90	AN818-6D	4	
-44	FUEL LINE INSTL.			1	

Engineer Code: SEE SH. 2.  
 Drawn: 8/18/84  
 Check: 8/18/84  
 Appr: 8/18/84  
 Scale: 1:1  
 Tol: ±.03  
 Print: 8/18/84  
 Used: 8/18/84  
 BUSHMASTER DESIGN LLC.  
 KENT, WASHINGTON - Division of Bushmaster Mfg. Ltd.  
 815 Westl Road, Coldstream, BC Canada, V1B 1Y4  
 FUEL TANK INSTL.  
 OPTIONAL -30 GAL.  
 SAC-2700  
 1-4C



-44 FUEL LINE INSTL.  
 (NO SCALE) ④



DETAIL I